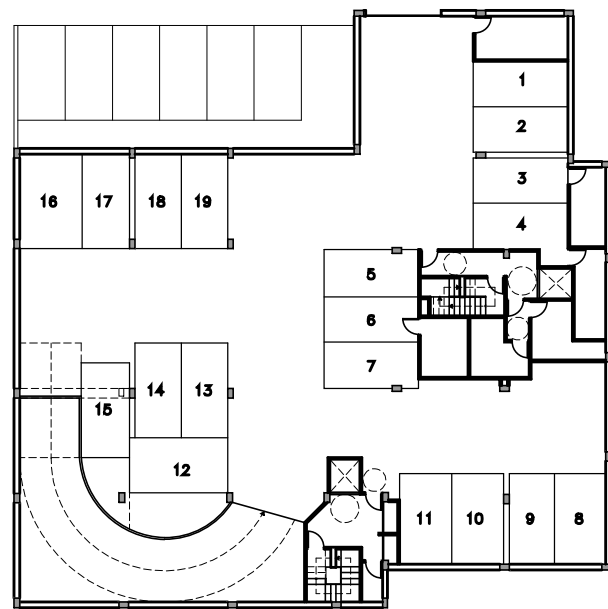
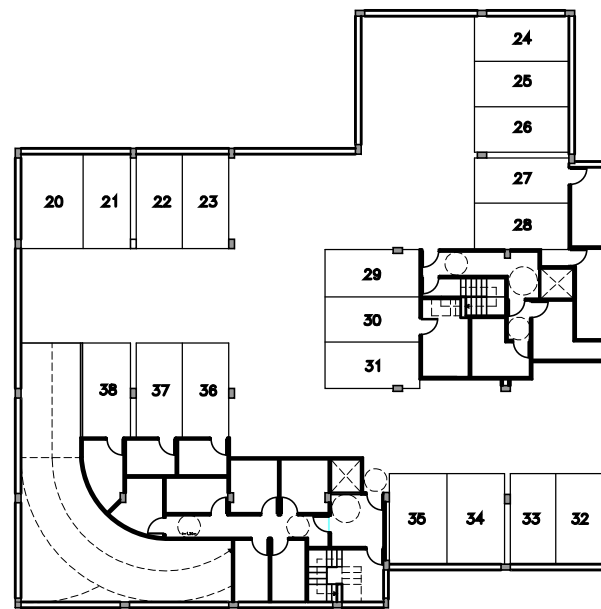




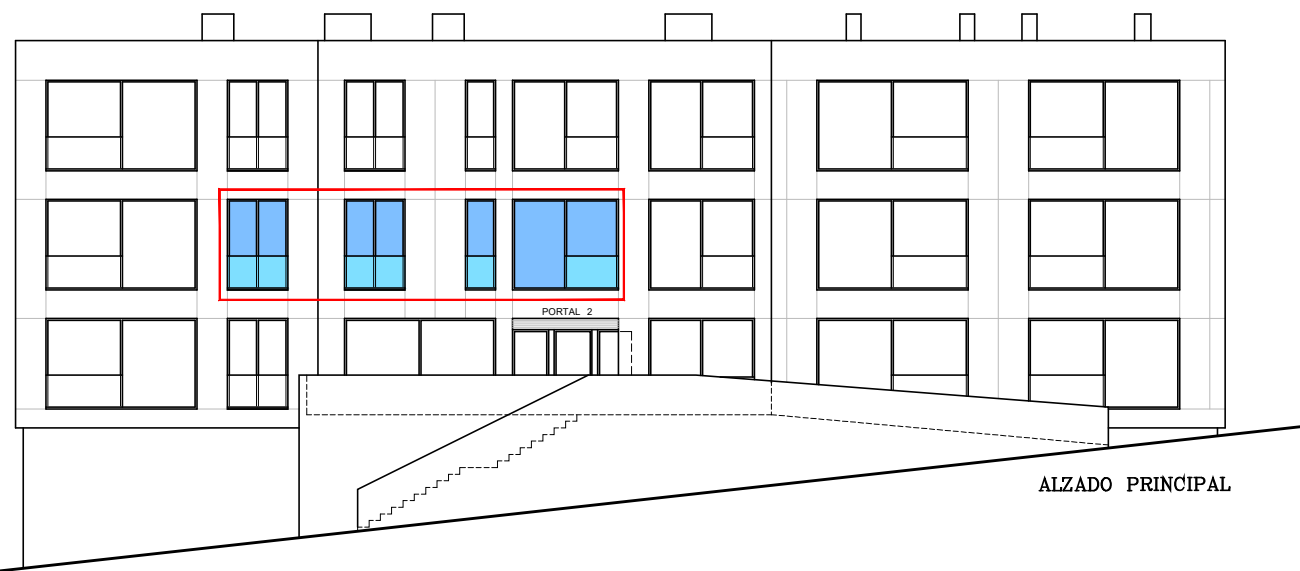
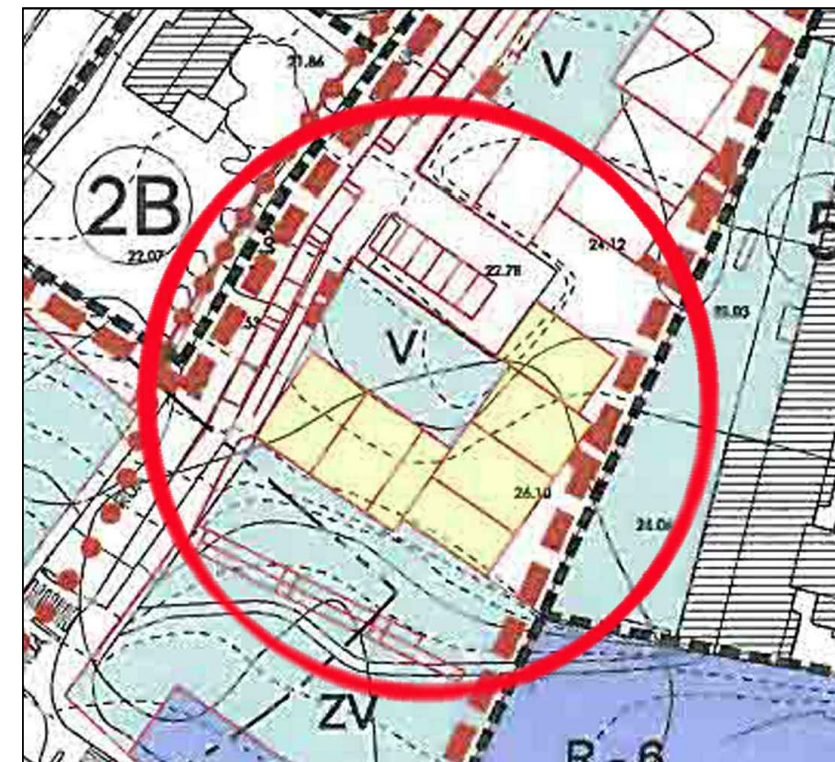
PLANTA PRIMERA



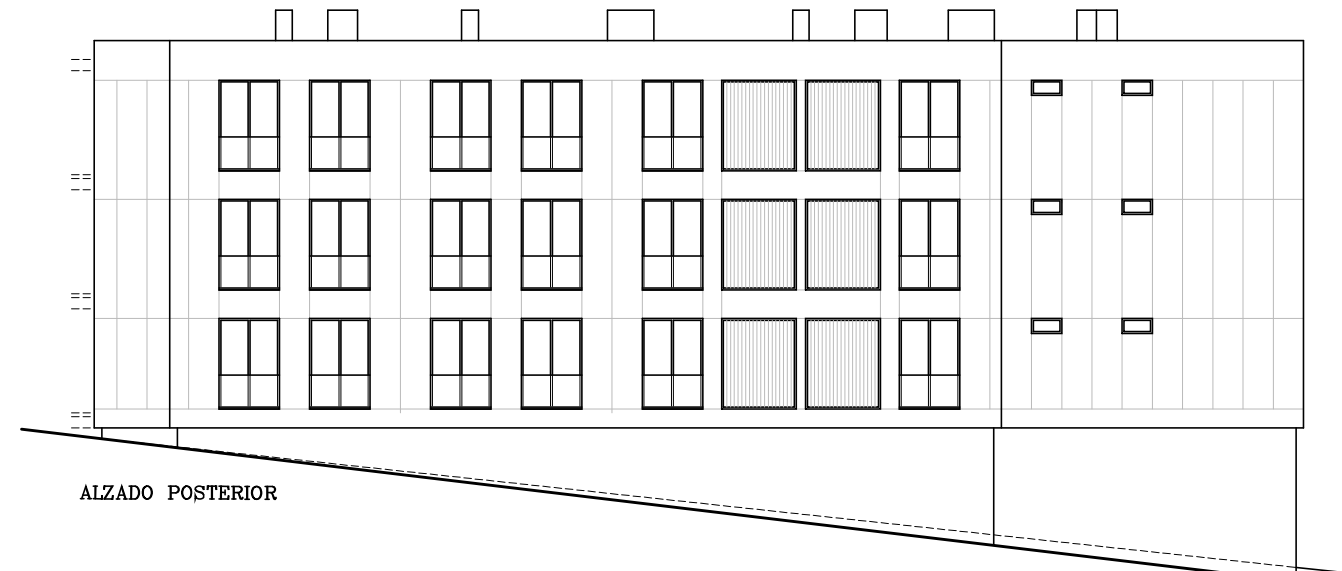
PLANTA SÓTANO 1



PLANTA SÓTANO 2



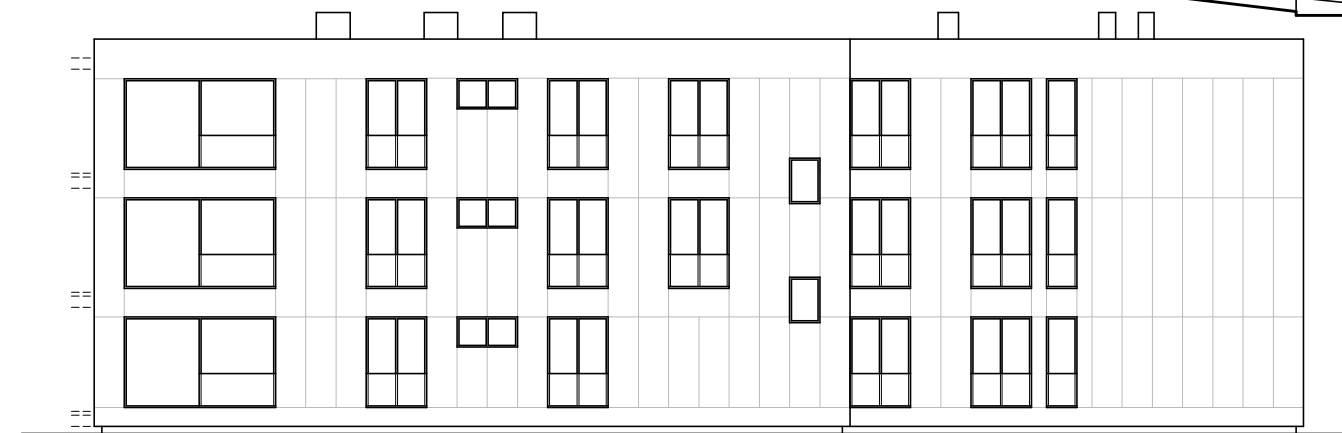
ALZADO PRINCIPAL



ALZADO POSTERIOR

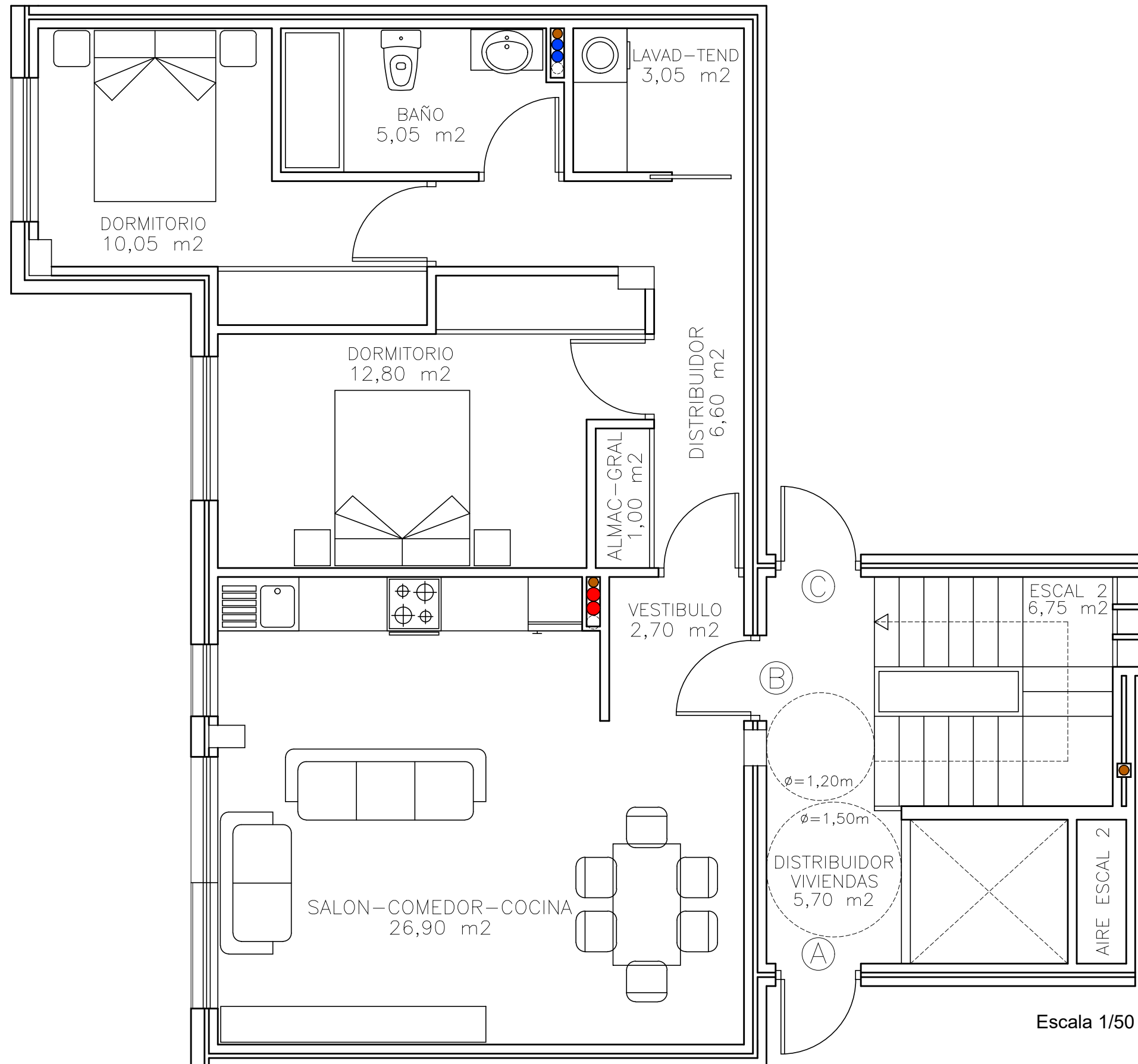


ALZADO LATERAL IZQUIERDO



ALZADO LATERAL DERECHO

EDIFICIO DE 18 VIVIENDAS Y GARAJES PROMOTOR: FARO CORRUBEDO, S.L
 SITUACION: MARIA SOLIÑA 3-ISLA 4 DEL PP 2-STA CRUZ
 AYUNTAMIENTO DE OLEIROS JULIO REY



Ficha, nº	Vivienda	Trastero nº	Plaza garaje	Sup. Útil	Sup. Construida	Precio
	Planta Primera Escalera 2_(B)			68,15 M2	78,65 M2	